



SOUTHERN UNIVERSITY LAW CENTER

OLIVER B. SPELLMAN LAW LIBRARY



DIRECTORY OF LIBRARY SERVICES

A Key to Library Resources

REVISED FALL 2009





SOUTHERN UNIVERSITY LAW CENTER
Oliver B. Spellman Law Library

CONTENTS

GENERAL INFORMATION

Location	2
Hours	2
Federal and State Depository	2
Staff Directory	3

LIBRARY RULES AND POLICIES

Circulation Policies	4
Recalls	4
Fines	4
Replacement Fees	4
Non-payment Penalties	4
Study Rooms	5
Study Carrels	5
Food, Drink, Smoking	5
Cellular Telephones & Pager	5
Honor Code Violations	5
Re-shelving	5
Examination of Property	5
Lost and Found	6
Missing Materials	6
Security	6

LIBRARY SERVICES

Interlibrary Loan	7
Photocopy Service	7
Computer & Online Services	8
Government Documents/Media	10
Louisiana Documents	9
Microforms	9
Audiovisuals	9

DIRECTORY OF RESOURCES 11

DIRECTORY OF LOCATIONS 18

GENERAL INFORMATION



Welcome to the Oliver B. Spellman Law Library at the Southern University Law Center. Our primary goal is to provide quality service to students and faculty, and to support the Law Center curriculum. The Law Library provides information resources and research services that assist students, faculty, and other users with preparing legal scholarship and training for the 21st century. An important secondary role of the library is to handle and preserve the extensive collections acquired to date, whatever their current level of use.

The Oliver B. Spellman Law Library is located on the Southern University, Baton Rouge Campus across the street from the John B. Cade University Library. Entrance to the Library is from the first floor atrium of the Law Center. The collection is housed on floors one through four (1-4).

Location: 56 Roosevelt Steptoe Drive **Mailing:** P.O. Box 9294
Baton Rouge, LA 70813 Baton Rouge, LA 70813-929

Telephone: **225-771-2146** Circulation & Reserve

Library Hours

During semesters:

Monday – Thursday	7:00 a.m. - midnight
Friday	7:00 a.m. – 5:00 p.m.
Saturday	9:00 a.m. – 5:00 p.m.
Sunday	2:00 p.m. – 10:00 p.m.

Library hours are subject to change during exam periods, holidays, summer sessions and semester breaks. Summer hour and holiday schedules are posted in the library. They are also available on our website at <http://www.sulc.edu>.

Federal and Louisiana Depository Materials

The Oliver B. Spellman Law Library is located in the 6th Congressional District. It was designated as a selective federal depository in 1979. This depository receives and retains at least one copy of selected publications made available from the GPO (**G**overnment**P**rinting**O**ffice).

The Spellman Library's Government Documents Collection also includes selected publications from Louisiana State Government. These government publications are produced by various governmental agencies, and are major sources of current and historical information concerning virtually every public policy that might describe or govern our society. Although most publications are in book or pamphlet form, they are also published as maps, periodicals, posters, microfiche, CD-ROMs, and electronic databases on the Internet. To access these materials during library hours call the Government Documents & Microforms Office at **(225) 771-2194**.

**OLIVER B. SPELLMAN LIBRARY
STAFF DIRECTORY**

Ruth J. Hill, MSLS, JD

*Director of Library Services and
Associate Professor of Law*

Rhill@sulc.edu

225-771-2315

Jean Allen

Acquisitions

Jallen@sulc.edu

771-2189

Ollie M. Lewis

Circulation & Reserve

Olewis@sulc.edu

771-2146

Albert Anderson, III

Checkpoint Guard

Aanderson@sulc.edu

771-2146

William M. Lockhart, Jr.

Circulation & Reserve

Wlockhart@sulc.edu

771-2146

Sylvia Moore Betts

Computer Services

Smooore@sulc.edu

771-3778

Kimala Pooler

Circulation & Reserve

Kpooler@sulc.edu

771-2146

Angela Scott Gaines

Computer Services

Againes@sulc.edu

771-4922

Adrienne M. Shields

Reference Services

Ashields@sulc.edu

771-2316

Rose Herbert

Government Documents & Microforms

Rherbert@sulc.edu

771-2194

Claudette Smith-Brown

Secretary to the Director

Csmithbrown@sulc.edu

771-2315

Harold W. Isadore

Reference Services

Hisadore@sulc.edu

771-2669

Mattie L. Weston

Checkpoint Guard

Mweston@sulc.edu

771-2146

Valinda LeDoux

Cataloging

Vledoux@sulc.edu

771-2196

Janice Williams

Acquisitions

Jwilliams@sulc.edu

771-2189

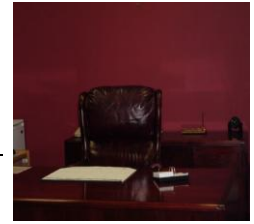
Wanda D. Lee

Looseleaf

Wlee@sulc.edu

771-4973

LIBRARY RULES AND POLICIES



From the desk of the Director

The Library supports research of Southern University Law Center students, faculty, and staff. All others may use the facilities and check out materials only at the discretion of the Director of Library Services.

CIRCULATION POLICIES

Students, faculty and staff must have a valid SULC Identification card. Other patrons must have a current photo identification.

- ▶ Books **14** days
- ▶ Reserve Materials **2** hours
- ▶ Examinations **2** hours

RECALLS

Fourteen (14) day loans may be kept for the entire loan period. However, recalls may be placed at any time.

FINES

Fines for regularly circulating items are \$0.35 per day up to the maximum cost of the book; however, students are expected to renew materials by the due date. Reserves and Exams are \$1.00 per day for titles with daily loan periods; and \$1.00 per hour with hourly loan periods at a \$16.00 maximum per day.

REPLACEMENT FEES

Patrons are billed for failing to return items following overdue notices. These volumes are considered lost by the library. Each volume is billed **at the cost** of the book **plus a \$25.00 replacement fee** and must be paid, as are any overdue fines on Reserve Collection titles.

After a billing statement is sent, patrons must pay any overdue fines, *even if the book is eventually returned to the library.* Patrons may not provide a replacement copy for a lost or damaged item.

You may appeal overdue fines, but lost book charges *cannot* be appealed. To appeal, contact the Circulation and Reserve desk at (225) 771-2146. Fees must be paid as they appear on your billing statement that you receive for the semester.

NON-PAYMENT PENALTIES

When an account reaches **\$50.00 in non-payments**, a hold is placed on University records. Users having outstanding fees may also be blocked on the circulation system and overdue accounts will eventually be referred to a collection agency. Questions concerning these matters can be discussed with the Circulation and Reserve Staff, Room 146, Monday - Friday, 8:00 AM - 5:00 PM, or by calling (225) 771-2416.

STUDY ROOMS

The library has two (2) study rooms that are available on a *first come, first serve* basis. These study rooms were designed to be used by a group of three (3) or more students. One member of the group may hold the room for a maximum of 30 minutes. If the group has not assembled after 30 minutes, the person holding the room must surrender the area and another group may occupy the room. ***Personal belongings should not be left in an unoccupied study area and food and drink are strictly forbidden.*** Violation of this policy may result in the surrender of the area. When leaving study area, please leave the door open.

Faculty members may reserve study rooms by contacting the Office of the Director of Library Services.

STUDY CARRELS

Study carrels are located throughout the library for student convenience. Locations include the Main Corridor, Stacks areas, Federal Reading Room, and the Alvin A. Roché, Jr., Jr. Reserve Reading Room. Every evening all library materials and all personal items will be removed from all unattended carrels. Personal items found are turned into the Lost and Found at the Circulation Desk. Library materials will be re-shelved.

FOOD, DRINK, SMOKING

Food is not allowed in the Law Library. Beverages are allowed, but *only* in ***spill-proof*** containers. Beverages are **NOT** allowed at *any* computer workstation or in either of the Computer Labs. Smoking is prohibited in the Law Center facility. **Violators of the food, drink, or smoking policies will be asked to leave and reported.**

CELLULAR TELEPHONES & PAGERS

As a courtesy to all library patrons, cellular telephone use is prohibited in the library. Telephone and pagers, however, may remain on, if they are set to **vibrate**, not ring. Patrons must leave the library before returning incoming calls and pages, no exceptions.

HONOR CODE VIOLATIONS

The theft or willful damage of Law Library materials, and the willful failure to properly reshel materials, with the intent to preclude another's use, are violations of the Law Center Honor Code. Such acts are considered serious by both Library and Law Center administration, and will be dealt with accordingly.

RE-SHELVING

Students are asked to reshel all **Reporters** immediately after use. Do not reshel any books with call numbers. These books are to be left on tables where used. Call number books will be returned to their proper location by the library staff for future access.

EXAMINATION OF PROPERTY

The Library exit is monitored by our Library Guard. A Patron's belongings are checked each time he or she exits the Law Library. Please open your bags at the checkpoint station. This policy is designed to insure proper management of library collection inventory.

LOST AND FOUND

Personal items and books found in the Law Library will be taken to *Lost and Found* located behind the Circulation & Reserve counter. The Law Center and the Law Library take no responsibility for return, or safekeeping of items left in the Law Library. Personal items and papers left are not the responsibility of the Law Center or Law Library.

MISSING MATERIALS

Questions regarding items which cannot be located on the library shelves should be referred to the Circulation & Reserve Desk to determine the status of the item. Missing items could have been checked out, or sent to the bindery. Items designated as missing are traced, and the patron is notified if the item is located.

SECURITY

Valuables such as cellular phones, book bags, purses, keys, laptops and briefcases should not be left unattended anywhere in the library. Thefts should be reported to the Director of Library Services.



LIBRARY SERVICES

The Law Center website: sulc.edu (SHORTCUT: www.sulc.edu/library/library.htm) contains information about the library's collections and services. Here can be found links to online legal resources, general library information, the library staff, and the *Library Catalog*.

INTERLIBRARY LOAN

An *Interlibrary Loan* service is available through Reference Services. You may contact our Reference Librarians to complete a request form, or for information about this service.

- **Harold Isadore**, Senior Reference Librarian - 225-771-2669
- **Adrienne Shields**, Night & Weekend Librarian - 225-772-2316

PHOTOCOPY SERVICE

Photocopiers are located on the first floor of the Law Library. The copying services are available during library hours. Check at the Circulation & Reserve Desk for assistance. Photocopy cost is at \$.06/copy for one-sided, black/white copies.

Law Students may add money for photocopying to their SULC Identification Card by using the **Photocopy Add-Value** machine located outside the Civil Rights Room across from the Circulation & Reserve Area.

Non-Students may use one of our *Guest Patron Debit Cards*, by completing the *Request Procedures* at the Circulation & Reserve Desk, and leaving a current photo identification with the staff member on-duty. **COPYING IS NOT FREE.** Guest patrons must add money to the *Debit Card* at the **Photocopy Add-Value** machine outside the Civil Rights room. Money cannot be refunded from this card; only add funds in an amount that you will use up in copying. The **Photocopy Add-Value** machine will accept bills in the following denominations: **\$1, \$5, \$10, or \$20.**

Photocopier Locations

- Alvin A. Roché, Jr. Reserve Reading Room
- Federal Reading Room Foyer by Elevator

FAQ:

Machine is not working, out of paper, or paper is jammed. Such questions relating to equipment problems should be reported to the Circulation & Reserve Desk, or the Reference Desk.

I received illegible copies. Report this to the Circulation & Reserve Desk or to the Reference Desk. Although a refund may not be given, a maximum of 5 clean copies may be provided by the library staff member on duty.

Where can I find a stapler, paper-cutter, or hole punch? These items are located at the Circulation & Reserve Desk, and Computer Labs in Rooms 136 & 169.

FAQ:

How can I add money to my card? Simply follow instructions on the Add-Value machine located across from the Circulation & Reserve Desk.

My card is not working properly. Report this to the Circulation & Reserve Desk, or to the Office for the Director of Library Services.



COMPUTER & ONLINE SERVICES

Computer Labs

There are two computer labs located on the first floor of the Law Library to facilitate computer access to students, faculty, and staff. **Computer Lab 168 & Computer Lab 135** are administered by our library staff. **Computer Lab 168** is located in the northeast section of the Federal Reading Room. **Computer Lab 135** is located off the main library corridor, south of the doorway to the upstairs Stacks area.

The labs are open during all Law Library hours for your convenience. Lab computers require a valid log-in and can be used only by students who have completed registration for the current semester; and SULC faculty/staff. Computer log-in IDs are obtained from **Information Technology Department** (2nd Floor-SULC) during the registration process, at the beginning of the semester. Library guest log-in IDs are administered by **Computer Services** in **Computer Lab 168**.

Neither food nor drinks (even in spill-proof containers) are allowed in the Computer Labs. A student who brings food into the library must put it away, or he or she will be asked to leave. A student who brings food or drinks into any computer lab will also be asked to leave.

All computers feature **Microsoft Office 2007 software** (with Word, Excel, Access, Outlook & Power Point applications). Microsoft Internet Explorer provides access to the World Wide Web (www.), and gives users access to:

- E-mail accounts
- **LexisNexis and Westlaw** research
- Class related research
- General information research

The Computer Labs are staffed during the day by two (2) full-time staff members, and student assistants during evening and weekend hours. **Please be mindful that both Computer Labs close fifteen (15) minutes earlier than the Law Library.**

Printing

Each computer is connected to a networked laser printer. Each student printing account comes with a printing capacity of 250 black/white, one-sided pages per semester. Additional printing can be purchased with a valid SULC ID from the **Printing Add-Value** machine located on the table between the computer stations on the main corridor.

When using *Westlaw* or *LexisNexis* in the computer lab, it is strongly recommended that students send their print jobs to the designated **Westlaw** (stand-alone) or **LexisNexis** printers located in **Computer Lab 136**, not to the attached network laser printers. If the print jobs are sent to the network laser printers, your account will be charged for each page printed. Both *Westlaw* and *LexisNexis* offer very liberal printing privileges when their printers are used: students are not charged for printing.

Telephones (2) are located in **Computer Lab 136** next to the *Westlaw* and *LexisNexis* printers, so that respective representatives can be contacted regarding *Westlaw* and *LexisNexis* related problems. Reference Librarians and student representatives (hours are posted) can answer any questions that you may have regarding online research.

Laptops

An Ethernet adapter is necessary to connect to the network and laptops must be registered with Computer Services before using the wireless network. Please see the **Information Technology Department** located on the second floor of the Law Center for more information.

LexisNexis & Westlaw

LexisNexis and *Westlaw* databases are limited to educational use only and can be accessed on-campus or off-campus. ***Computer Lab 136* houses the *LexisNexis* and *Westlaw* printers.** Computer copy that is printed from either website should be directed to the appropriate printer. You must then pick up your FREE copies in ***Computer Lab 136***. *Copy sent to the regular printers in **Computer Lab 168** will be deducted from your printing balance on your SULC ID card.*

First semester law students are given an access passwords to *Westlaw* and to *LexisNexis* during 1L Orientation held prior to registration. Students who fail to get their passwords during the two-day orientation are then responsible for contacting Student Representatives from *Westlaw* and from *LexisNexis* to get password access to the databases. **Contact information for *Westlaw* and *LexisNexis* Student Representatives is posted in Computer Labs 136 & 168.** Library staff members are not authorized to assign passwords for either of these databases. The company representatives train each first-year student in the use of these databases. Advanced classes are held throughout the year for all students.

Law Library TWEN Page

The Law Library **TWEN** page can be accessed by ***Westlaw*** log-in, on and off campus. Select ***TWEN***, then click ***Add a Course***; select ***Oliver B. Spellman Law Library***, click ***Submit***. To view exams, select ***Exams***, chose from the alphabetical listing and open the folder for your subject, and select the exams for the professor needed. ***1Ls have restricted access to selected materials for the 1L class.***

GOVERNMENT DOCUMENTS, MICROFORMS & MEDIA

The Government Documents, Microform and Media department is located on the first floor of the Law Library in **Room 169**. All items in this collection can be viewed in the library. Many items are reference materials and may not be checked out at anytime. Certain documents are restricted, and can only be checked out by faculty or staff member. Circulation & Reserve cannot circulate items from this collection.

GDMM also provides access to an inventory of state, and federal government documents published online through various websites. Federal documents in print media are shelved according to the Superintendent of Documents (**SuDocs**) number. The classification numbers usually correspond to the issuing agency. Items are shelved in alphanumerical order according to this system, and the shelves are labeled to indicate the range of classification numbers in each. These items are located in the **West Stacks, FirstLevel**. Materials are selected from all major executive, judicial, and legislative agencies and bodies, with emphasis on topics that support the law school curriculum, faculty and student research, and needs of our general users. Please consult the Government Document Specialist if you need assistance.

Louisiana Documents

Louisiana documents are shelved in the **West Stacks, Level One**. These documents are arranged by issuing agency, using a system similar to the one for U.S. documents. In addition, other Louisiana related materials, including the Louisiana Statutes, Annotated, the Southern Reporter, the Louisiana Digest, and the Louisiana Law Reviews are shelved in the Louisiana Reading Room. Specific inquiries concerning all Louisiana materials should be directed to the Governments Documents Specialist in Room 169 or to the Reference Librarians.

Microforms

Government documents, maps, and legal publications make up our extensive microfiche and microfilm collection. There are two microform readers located in the Government Documents, Microforms & Media area; and a Digital Microform Reader/Printer and Computer Workstation located in the Federal Reserve Reading Room to facilitate: 1) document printing needs; and 2) document transfer for computer accessibility. **No microforms can be checked out to anyone at anytime.** Any questions regarding microforms should be directed to the Government Documents Specialist in Room 169.

Audio/Visuals

Audio/Visual materials are located at the Circulation & Reserve Desk, and in Government Documents, Microforms & Media area. These items are designated as "Media" in the Library Catalog (OPAC), and include DVDs, VHS tapes, and cassette tapes with a legal or historical theme. Our DVD collection is constantly being updated with the latest releases of legal/historical movies, documentaries, and class materials. *Audio/Visual* equipment is available at the Circulation & Reserve Desk for Law Library viewing of media. Any questions regarding *Audio/Visuals* should be directed to the Government Documents Specialist in Room 169 or to Circulation & Reserve Staff.

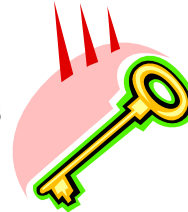
DIRECTORY OF RESOURCES

A Key to Library Resources....Unlock the Potential



The Directory of Library Sources is listed in alphabetical order. By using the table below you should be able to locate what is needed. If help is needed, please locate one of the library staff members.

KEY TO ABBREVIATIONS



CRC	=	Circulation & Reserve Counter
CR	=	Civil Rights Reading Room (Located on first floor on the right of the Circulation desk)
FR	=	Federal Reading Room (Located on the first floor between the Computer lab and Reference Desk)
LAR	=	Louisiana Reading Room (Located on first floor on the right of the Federal Reading Room)
MM	=	Microfilm/Media
RR	=	Reserve Reading Room
ES1	=	East Stacks First Level
ES2	=	East Stacks Second Level
ES3	=	East Stacks Third Level
ES4	=	East Stacks Fourth Level
WS1	=	West Stacks First Level
WS2	=	West Stacks Second Level



DIRECTORY OF RESOURCES

<u>NAME</u>	<u>LOCATION</u>
Acts of State of Louisiana _____	(LAR)
Alabama Digest _____	(FR)
Alabama Reports _____	(FR)
ALR (all sets) _____	(FR)
American Decisions _____	(WS2)
American Jurisprudence _____	(FR)
American Maritime Cases _____	(FR)
American Reports _____	(WS2)
American State Reports _____	(WS2)
Atlantic Reporter _____	(WS1)
Audio Cassette _____	(MM&RR)
Bankruptcy Digest _____	(FR)
Bankruptcy Reporter _____	(FR)
Black's Law Dictionary _____	(FR&RR)
California Reporter _____	(FR)
Chitty's English Statutes _____	(WS2)
Civil Rights Collection _____	(CR)
Corpus Juris Secundum _____	(FR)
Current Law Index _____	(FR)
Decennials (1st - 10th) _____	(FR)
DVD Legal Media _____	(CRC)
Education Law Digest _____	(FR)
Education Law Reporter _____	(FR)
Encyclopedia Britannica _____	(FR)
English Law Reports _____	(WS2 & MM)
Environmental Reports _____	(WS2 & FR)
Federal Cases _____	(FR)
Federal Digest _____	(FR)
Federal Practice Digest _____	(FR)
Federal Practice Digest (2nd, 3rd & 4th) _____	(FR)
Federal Reporter (1st, 2nd & 3rd) _____	(FR)
Federal Rules Decisions _____	(FR)
Federal Supplement (1st & 2nd) _____	(FR)
Florida Cases _____	(FR)
Florida Digest _____	(FR)
Foreign Law _____	(WS2)
General Encyclopedias _____	(FR)
Government Documents (Federal & State) _____	(WS1 & MM)
Historical Materials _____	(WS2)
Illinois Decisions _____	(FR)

Index to Code of Federal Regulations _____ (FR)
 Index to Foreign Periodicals _____ (FR)
 Index to Legal Periodicals _____ (FR)

Labor Relation Board _____ (WS2)
 Law Reviews _____ (ES3 & ES4)

Library of Congress Classifications:

A	General Works	(ES1)
B	Philosophy, Religion	(ES1)
C	History	(ES1)
D	World History	(ES1)
E	American History	(ES1)
F	State History	(ES1)
H	Social Science	(ES1)
J	Political Science	(ES1)
JX	International Law	(ES1)
K-KF	Law	(ES1 & ES2)
KFA-KFW	State Materials	(ES2)
L	Education	(ES2)
Q	Science	(ES2)
R	Medicine	(ES2)
T	Technology	(ES2)
Z	Bibliography & Library Science	(ES2)

LexisNexis Louisiana Statutes Annotated (Red Books) _____ (WS2, RR & LAR)
 Louisiana Acts of the Legislature _____ (LAR)
 Louisiana Administrative Code _____ (LAR & WS1)
 Louisiana Attorney General Opinions _____ (LAR)
 Louisiana Cases _____ (LAR)
 Louisiana Collection _____ (LAR)
 Louisiana Digest _____ (LAR)
 Louisiana Law Review _____ (ES3)
 Louisiana Statutes Annotated _____ (LAR, RR & WS2)
 Loyola Law Review _____ (ES3)

Martindale-Hubbell Law Directory _____ (RR)
 Microfiche _____ (MM)
 Microfilm _____ (MM)
 Military Justice Reporter _____ (FR)
 Mississippi Cases _____ (FR)
 Mississippi Digest _____ (FR)
 Modern Federal Practice Digest _____ (FR)

National Reporter Blue Book _____ (FR)
 New York Supplement _____ (FR)
 Newspaper & Magazine Collection _____ (FR)
 Northeastern Reporter _____ (WS1)
 Northwestern Reporter _____ (WS1)

Pacific Reporter _____(WS1)
 Patent Cases _____(WS2)

Ready Reference _____(RR)
 Reserve Books _____(RR)
 Restatement of the Law _____(FR & RR)

Shepard's Citators (all sets) _____(FR)
 Southeastern Reporter _____(WS1)
 Southern Law Review _____(ES4)
 Southern Reporter _____(LAR & WS1)
 Southwestern Reporter _____(WS1)
 State Reporters (pre-national Reporter system) _____(WS1)
 State Statues _____(WS2)
 Supreme Court Reporter (West) _____(FR)

Tax Reports _____(WS2)
 Tax Services _____(FR)
 Tulane Law Review _____(ES4)

Uniform Law Annotated _____(FR & ES1)
 U.S. Claims Court Reporter _____(FR)
 U.S. Code _____(FR)
 U.S. Code Annotated (West) _____(FR)
 U.S. Code Service (Lexis-Nexis) _____(FR)
 U.S. Code Congressional & Administrative News _____(FR)
 U.S. Reports _____(FR)
 U.S. Statutes at Large _____(FR)
 U.S. Supreme Court Digest (Lawyers Ed.) _____(FR)
 U.S. Supreme Court Digest (West) _____(FR)
 U. S. Supreme Court Reports (Lawyers Ed.) _____(FR)

Video Cassette _____(MM)

West Federal Digest (2d, 3rd & 4th) _____(FR)
 West's Encyclopedia of American Law _____(FR)
 West's Encyclopedia of American Law (2d) _____(FR)
 West's Louisiana Statutes Annotated _____(Green Book) _____(LAR & RR)
 West's Social Security Reporting Service _____(FR)
 Words and Phrases _____(FR)

DIRECTORY OF LOCATIONS

All books are shelved in the order in which they are listed.

Circulation & Reserve Counter

DVD Collection of Legal Media (films, classroom media, documentaries, etc...)

Civil Rights Reading Room *Room 141*

Civil Rights Collection (A-Z)

Federal Reading Room *Room 164*

Periodical Indexes	Education Law Digest
Shepard's	Military Justice Reporter
National Reporter Blue Book	United States Claims Court Reporter
Restatements of the Law	United States Claims Court Digest
American Jurisprudence 2d	American Maritime Cases
Corpus Juris Secundum	Alabama Reports
West's Encyclopedia of American Law	Alabama Digest
The Guide to American Law	California Reporter
General Encyclopedias	Florida Cases
Words and Phrases	Florida Digest
Uniform Law Annotated	Florida Digest 2d
United States Statutes at Large	Illinois Decisions
United States Code Congressional and Administrative News	Mississippi Cases
United States Code	Mississippi Digest
United States Code Annotated	New York Supplement
Federal Reporter	New York Supplement 2d Series
Federal Reporter 2d Series	Ready Reference Collection
Federal Reporter 3d Series	Martindale -Hubbell Law Directory
Federal Supplement	Tax Services
Federal Supplement 2d	Looseleaf
West's Federal Case News	Opinions of the Attorney General (U.S)
Federal Rules Decisions	United States Reports
Federal Digest	Supreme Court Reporter
Modern Federal Practice Digest	Supreme Court Digest
West's Federal Practice Digest 2d, 3d & 4 th	Supreme Court Reports Lawyers Edition
American Law Reports	United States Supreme Court Digest Lawyers Edition
American Law Reports 2d, 3d, 4 th , 5 th & 6 th	United States Code Service
ALR Federal, 2d	West's Social Security Reporting Service
Bankruptcy Reporter	Federal Cases
Bankruptcy Digest	American Digest 1658 – 1896
West's Veterans Appeals Reporter	American Digest – Decennial 2d – 11 th
West's Veterans Appeals Cumulative Digest	General Digest
Education Law Reporter	Atlantic Digest 2d
	North Western Digest 2d
	Pacific Digest (all volumes)
	South Eastern Digest 2d
	Newspaper & Magazine Collection

Washington Marshall - Louisiana Reading Room Room 160

Southern Reporter
Southern Reporter 2d Series
Southern Reporter 3d Series
Shepard's Louisiana Citations
Louisiana Digest
Louisiana Digest 2d Series
Opinions of the Attorney General
Acts of the State of Louisiana
Louisiana Revised Statutes
Louisiana Administrative Code

Microfilm/Media Room 169 and * Circulation & Reserve Counter**

Microfilm
Microfiche
Audio Cassettes
Video Cassettes
DVDs
DVD Legal Films & Media***
Government Documents

Alvin A. Roche, Jr. - Reserve Reading Room Room 147

Reserve Collection
Louisiana Revised Statutes
Sum/Substance Tapes
Old Examinations
Bar Reviews
Quick Review Books
Audio/Video Materials & Equipment
Flash Cards

Stacks East

1 st Level	-	LC Classification	(A-KF1414)
2 nd Level	-	LC Classification	(KF1415 - Z)
3 rd Level	-	Law Reviews	(A - M)
4 th Level	-	Law Reviews	(N - Z)

Stacks West - 1st Level

Atlantic Reporter
Atlantic Reporter 2d
North Eastern Reporter
North Eastern Reporter 2d
North Western Reporter
North Western Reporter 2d
Pacific Reporter
Pacific Reporter 2d, 3d
South Eastern Reporter
South Eastern Reporter 2d
South Western Reporter
South Western Reporter 2d, 3d
Southern Reporter
Southern Reporter 2d, 3d
Pre-national Reporting System Reporters: Alabama - Wisconsin

Stacks West -1st Level cont'd

Federal Documents
Louisiana Documents

Stacks West - 2nd Level

State Statutes: Alabama – Wyoming (including District of Columbia and Puerto Rico)
Court of Claims Reports

Stacks West - 2nd Level Cont'd

United States Court of Customs & Patents Appeals Reports
United States Aviation Reports
Interstate Commerce Commission Reports
United States Board of Tax Appeals Reports
American Federal Tax Reports
United States Tax Cases
Tax Court Memorandum Decisions
Tax Court Digest
Federal Tax Regulations
Internal Revenue Code
Opinions of the Attorney General (U.S.)
Labor Arbitration Awards
Labor Cases
Employment Practices Decisions
NLRB Decisions
Decisions and Orders of the NLRB
Labor Relations Reference Manual
Decisions of the Department of the Interior
Foreign Law
Supreme Court Reports (India)
Chitty's English Statutes
English Law Reports

Historical Collection

American Reports
American Decisions
Ruling Case Law
American State Reporters
American Annotated Cases
Federal Cases
United States Reports
United States Supreme Court Reports
United States Supreme Court Reports
Lawyers Edition
United States Supreme Court Digest
Lawyers Edition
American Law Reports – 1st, 2nd, 3rd, 4th
& Federal
American Digest 1658 -1896
American Digest 1897 -1906
American Digest 1907 -1916
Decennials
General Digest–7th, 8th, 9th, 10th, 11th & 12th
Harvard Law Review
Louisiana Law Review
Tulane Law Review
Reports of American Bar Association
Federal Reporter
Federal Reporter 2d
Federal Supplement
Federal Rules Decision
Southern Reporter
Southern Reporter 2d
Restatement of the Law
Old Textbooks
United States Code Annotated
U.S. Code Congressional and
Administrative News

Miscellaneous Regional Reporters
Public Utilities Reporters
American Jurisprudence
Corpus Juris
Corpus Juris Secundum
Louisiana Digest
Louisiana Digest 2d ed.
Law School Examinations
Louisiana Cases
Louisiana Revised Statutes 1950
Acts State of Louisiana
Reports and Opinions of the Attorney
General of Louisiana
Official Journal (Senate & House of
Representative)
Louisiana Bar Association
McMahon Louisiana Practice
Marr's Annotated Revised Statutes of
Louisiana
Louisiana Civil Code Materials
Project of the Constitution for the State
of Louisiana with Notes and Studies
Southern Reports 2d
Martin's Reports
Robinson's Reports
Parish of Orleans Court of Appeals
Louisiana Court of Appeals Reports
Louisiana Annual Reports
Louisiana Reports
Louisiana Revised Statutes
Peltier's Orleans Appeals
Louisiana Reports
Louisiana Cases

Other Service Areas

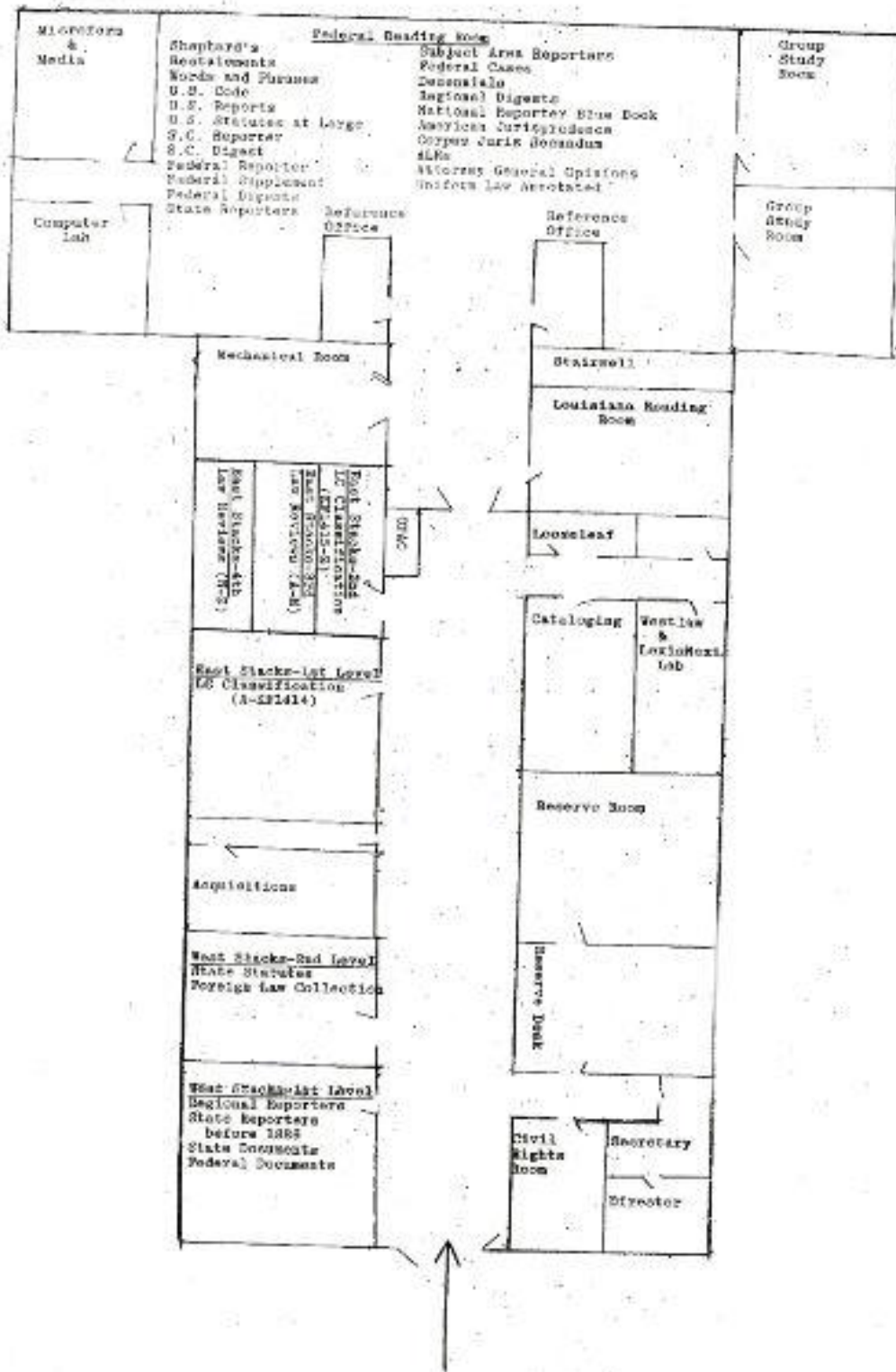
Civil Rights Collection _____
Computer Labs _____
Copy Machines _____

Group Study Rooms _____
Director's Office _____
Govt Docu, Microforms & Media _____
Circulation & Reserve _____
Reference Services _____
Westlaw & Lexis-Nexis _____
TWEN _____

Online Public Access _____
Library Catalog (OPAC) _____

Room 141
Rooms 136 & 168
Alvin A. Roché, Jr. Reserve Reading Room
Federal Reading Room (foyer by elevator)
161 & 162
Room 142 & 143
Room 169
Room 147
Room 158 or 163
On and Off Campus – Computer Access
Log onto Westlaw, Instructions @ Circulation
& Reserve Desk
Accessed from Library Computer Workstations
sulc.edu, Library menu

OLIVER B. SPELLMAN LAW LIBRARY



Entrance from Southern University Law Center Atrium

(East Double Doors)